



Software update procedure – P5 Life

Android™ 5.0, Lollipop

These are the advantages of updating the soft:

- *Updating the operating system from Android 4.4 KitKat to Android 5.1 Lollipop;*
- *Find a major change of the interface(design): natural moves, shadows and several visual effects etc;*
- *For preinstalled apps a change of interfaces: dialling display, settings, camera menu, shortcuts etc;*
- *A more efficient resources management ;*




ATTENTION! The battery must be fully charged, and the phone must be turned off when initializing the procedure.

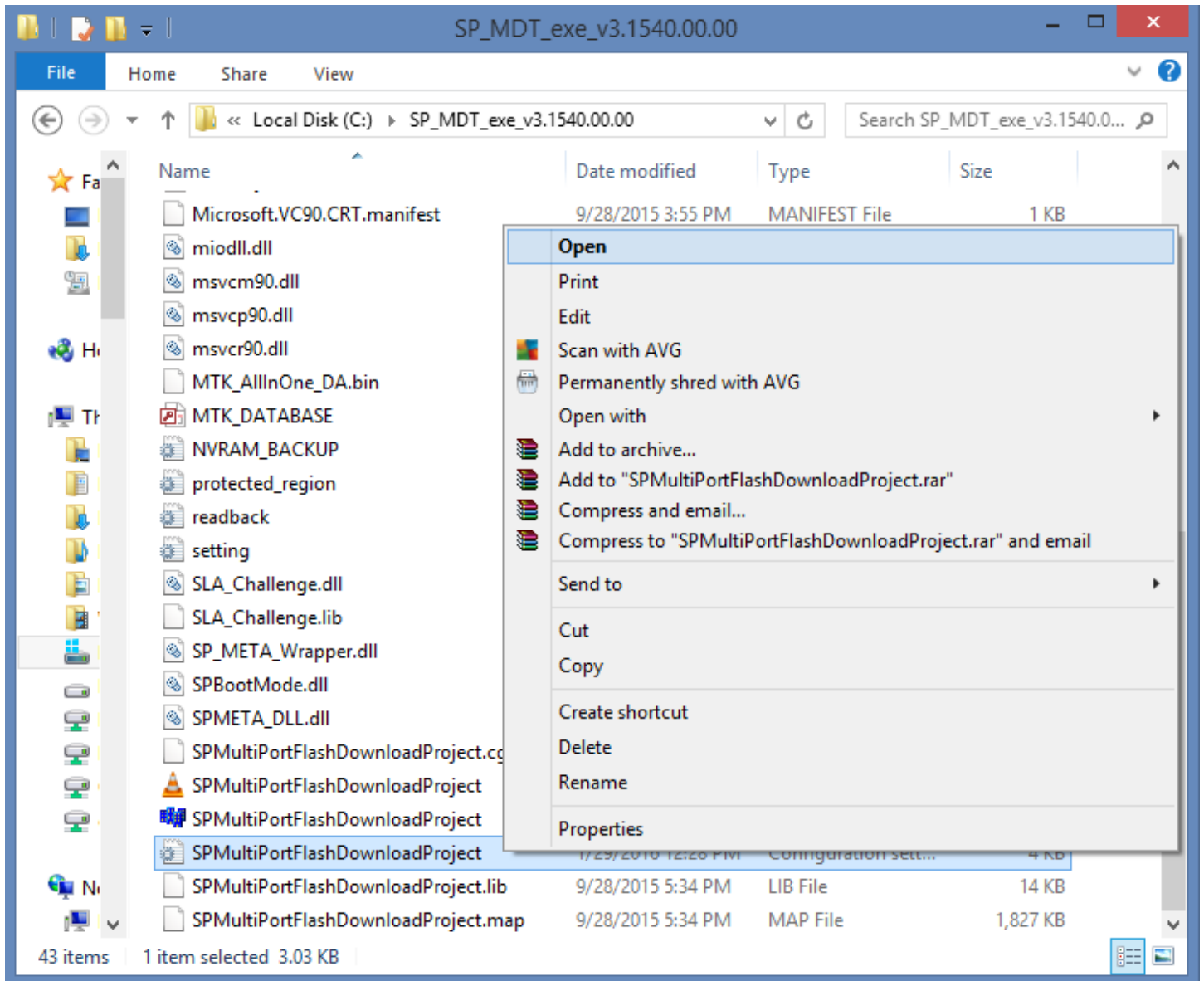


ATTENTION! Do not interrupt the updating operation under any circumstances.



ATTENTION! Updating the operating system will lead to total removal of personal information and installed apps.

1. Download the archives: "**Update_P5_Life_5.0_08.10.2015**", "**SP_MDT_exe_v3.1540.00.00**" and "**Driver.zip**" on a desktop or laptop. Unzip into a folder all 3 archives from above.
2. From **Driver** folder, install all necessary drivers. They are compatible with Windows XP, Windows 7, Windows 8, Windows 10. Open up  **UsbDriverSetup** executable and follow the steps in order to install the driver.
3. In "**SP_MDT_exe_v3.1540.00.00**" folder, double-click on the **SPMultiPortFlashDownloadProject** executable and **Open**, then make sure that **ScanComportType=1** , save (**File – Save**) and close document as shown below:






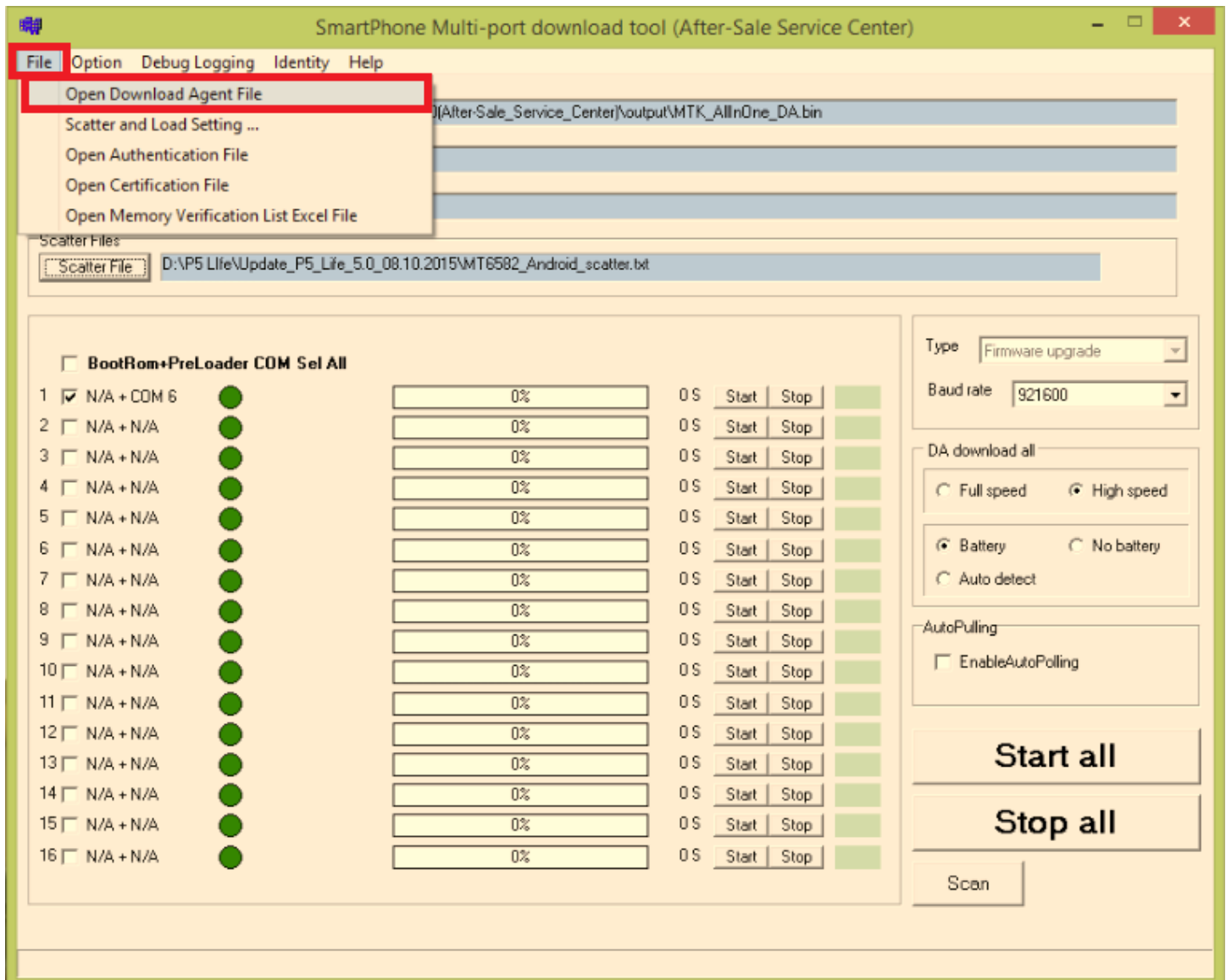
SPMultiPortFlashDownloadProject - Notepad

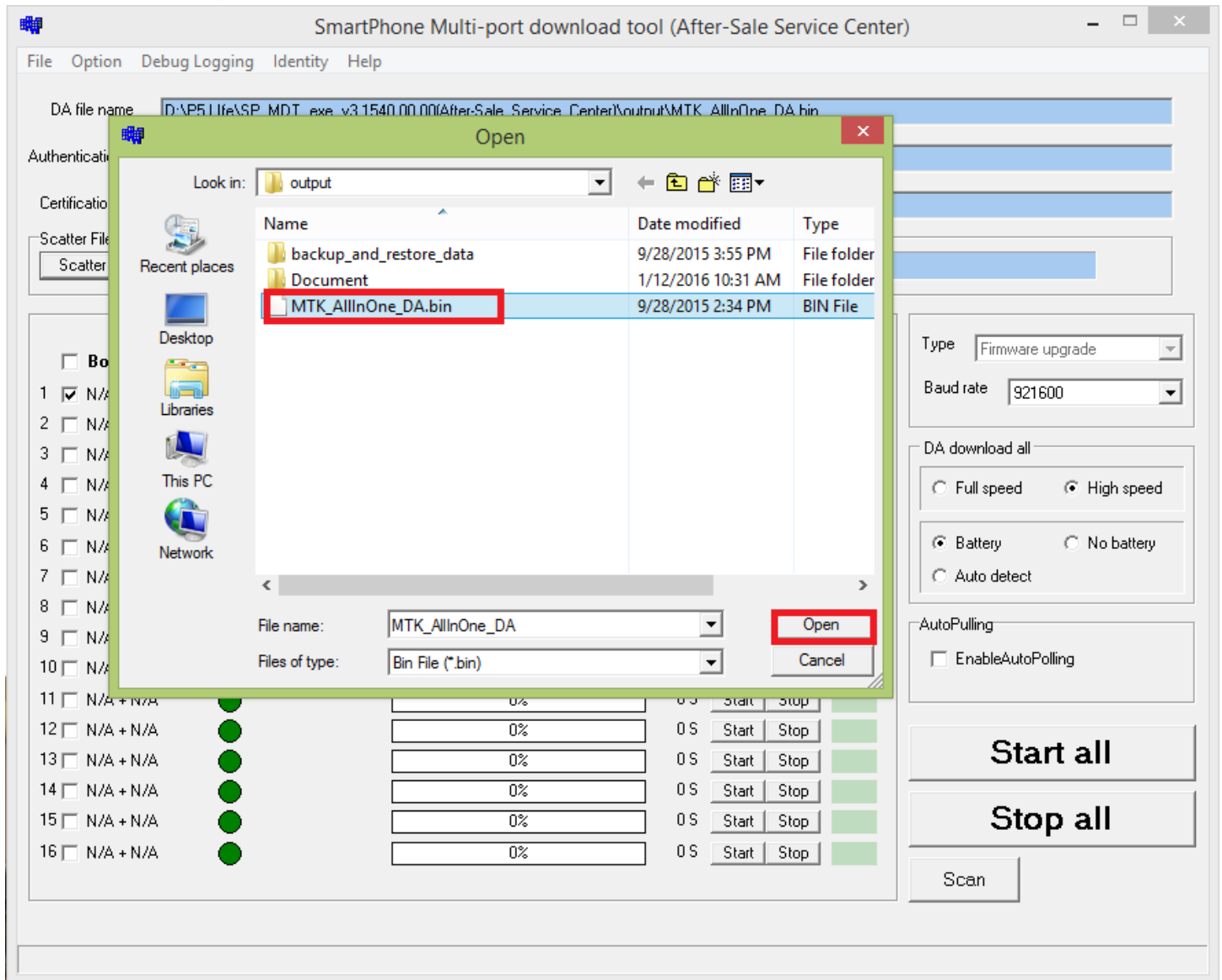
File Edit Format View Help

```
[form]
Baseband chip=auto detect
External clock=26mhz
BROM_DLL logging=yes
META_DLL logging=yes
Eboot_DLL logging=yes
Baudrate=921600
ComportEnabled=0x01
Auto polling enabled=0
Auto polling count=0
Type=Firmware upgrade
Force_ALL_IMAGE_DL=yes
Force_Checksum_Version=V1
Auth file=
Cert file=
Format FAT range=auto
ScanComportType=1
ForceWatchdogReset=no
ForceWatchdogResetTimeout=0
Enable_Secro_Reworking_Feature=no
```



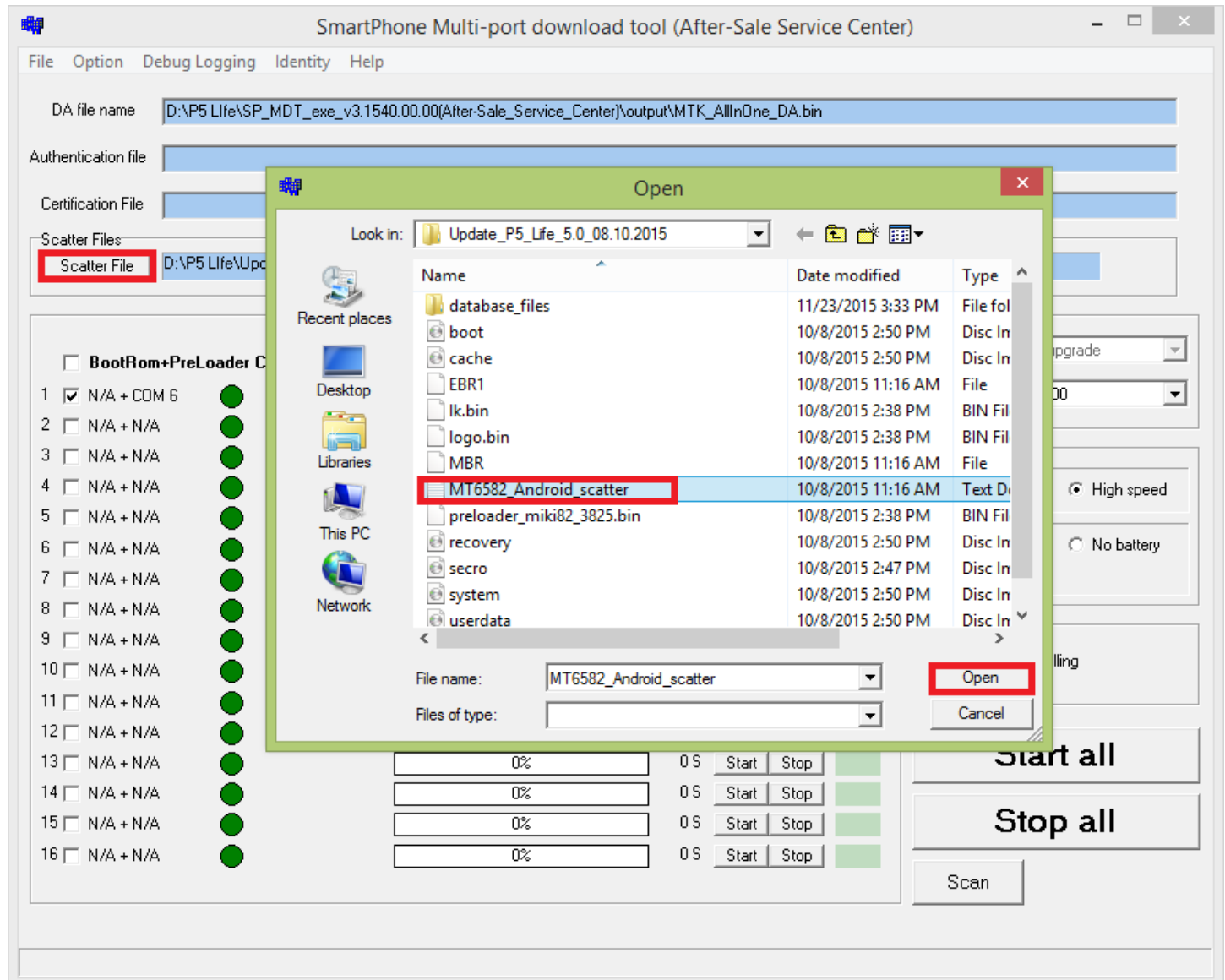
4. In “**SP_MDT_exe_v3.1540.00.00**” folder, double-click on the  **SPMultiPortFlashDownloadProject** executable
5. Click on the **File** option of **SP_MDT_exe_v3.1540.00.00** and select **MTK_AllInOne_DA.bin** file from **SP_MDT_exe_v3.1540.00.00** folder, as shown below:







6. Click on the **Scatter-File** option of the tool's flash and select **MT6582_Android_scatter** file from **Update_P5_Life_5.0_08.10.2015** folder, and scan the phone as shown below:





7. To detect the USB port, click **SCAN** button and connect the phone while turned off.

SmartPhone Multi-port download tool (After-Sale Service Center)

File Option Debug Logging Identity Help

DA file name: D:\P5 Life\SP_MDT_exe_v3.1540.00.00(After-Sale_Service_Center)\output\MTK_AllInOne_DA.bin

Authentication file:

Certification File:

Scatter Files:

Scatter File: D:\P5 Life\Update_P5_Life_5.0_08.10.2015\MT6582_Android_scatter.txt

☐ BootRom+PreLoader COM Sel All

1	<input checked="" type="checkbox"/> N/A + COM 6	0%	0 S	Start	Stop			
2	<input type="checkbox"/> N/A + N/A	0%	0 S	Start	Stop			
3	<input type="checkbox"/> N/A + N/A							
4	<input type="checkbox"/> N/A + N/A							
5	<input type="checkbox"/> N/A + N/A							
6	<input type="checkbox"/> N/A + N/A							
7	<input type="checkbox"/> N/A + N/A							
8	<input type="checkbox"/> N/A + N/A							
9	<input type="checkbox"/> N/A + N/A							
10	<input type="checkbox"/> N/A + N/A	0%	0 S	Start	Stop			
11	<input type="checkbox"/> N/A + N/A	0%	0 S	Start	Stop			
12	<input type="checkbox"/> N/A + N/A	0%	0 S	Start	Stop			
13	<input type="checkbox"/> N/A + N/A	0%	0 S	Start	Stop			
14	<input type="checkbox"/> N/A + N/A	0%	0 S	Start	Stop			
15	<input type="checkbox"/> N/A + N/A	0%	0 S	Start	Stop			
16	<input type="checkbox"/> N/A + N/A	0%	0 S	Start	Stop			

Scan Comport Warning

The selected comports will be reset, are you sure to scan comports?

Yes No

Type: Firmware upgrade

Baud rate: 921600

DA download all:

☐ Full speed ☒ High speed

☒ Battery ☐ No battery

☐ Auto detect

AutoPulling

☐ EnableAutoPolling

Start all

Stop all

Scan



SmartPhone Multi-port download tool (After-Sale Service Center)

File Option Debug Logging Identity Help

DA file name: D:\P5 Life\SP_MDT_exe_v3.1540.00.00(After-Sale_Service_Center)\output\MTK_AllInOne_DA.bin

Authentication file:

Certification File:

Scatter Files:

Scatter File: D:\P5 Life\Update_P5_Life_5.0_08.10.2015\MT6582_Android_scatter.txt

<input type="checkbox"/> BootRom+PreLoader COM Sel All			
1	<input checked="" type="checkbox"/> N/A + COM 6	Scan Success!	100%
2	<input type="checkbox"/> N/A + N/A		0%
3	<input type="checkbox"/> N/A + N/A		0%
4	<input type="checkbox"/> N/A + N/A		0%
5	<input type="checkbox"/> N/A + N/A		0%
6	<input type="checkbox"/> N/A + N/A		0%
7	<input type="checkbox"/> N/A + N/A		0%
8	<input type="checkbox"/> N/A + N/A		0%
9	<input type="checkbox"/> N/A + N/A		0%
10	<input type="checkbox"/> N/A + N/A		0%
11	<input type="checkbox"/> N/A + N/A		0%
12	<input type="checkbox"/> N/A + N/A		0%
13	<input type="checkbox"/> N/A + N/A		0%
14	<input type="checkbox"/> N/A + N/A		0%
15	<input type="checkbox"/> N/A + N/A		0%
16	<input type="checkbox"/> N/A + N/A		0%

Type: Firmware upgrade

Baud rate: 921600

DA download all:

☐ Full speed ☒ High speed

☒ Battery ☐ No battery

☐ Auto detect

AutoPulling:

☐ EnableAutoPolling

Start all

Stop all

Scan



ATTENTION! In case that the USB port hasn't been detected make sure you have followed the exact steps from Step 3.



8. After scanning the port, unplug the mobile, click **Start all** and reconnect the phone, while turned off, to the same USB port.(see image below)

SmartPhone Multi-port download tool (After-Sale Service Center)

File Option Debug Logging Identity Help

DA file name: D:\P5 Life\SP_MDT_exe_v3.1540.00.00(After-Sale_Service_Center)\output\MTK_AllInOne_DA.bin

Authentication file:

Certification File:

Scatter Files: Scatter File: D:\P5 Life\Update_P5_Life_5.0_08.10.2015\MT6582_Android_scatter.txt

☐ BootRom+PreLoader COM Sel All

			START					
1	<input checked="" type="checkbox"/> N/A + COM 8	●		0%	7 S	Start	Stop	
2	<input type="checkbox"/> N/A + N/A	●		0%	0 S	Start	Stop	
3	<input type="checkbox"/> N/A + N/A	●		0%	0 S	Start	Stop	
4	<input type="checkbox"/> N/A + N/A	●		0%	0 S	Start	Stop	
5	<input type="checkbox"/> N/A + N/A	●		0%	0 S	Start	Stop	
6	<input type="checkbox"/> N/A + N/A	●		0%	0 S	Start	Stop	
7	<input type="checkbox"/> N/A + N/A	●		0%	0 S	Start	Stop	
8	<input type="checkbox"/> N/A + N/A	●		0%	0 S	Start	Stop	
9	<input type="checkbox"/> N/A + N/A	●		0%	0 S	Start	Stop	
10	<input type="checkbox"/> N/A + N/A	●		0%	0 S	Start	Stop	
11	<input type="checkbox"/> N/A + N/A	●		0%	0 S	Start	Stop	
12	<input type="checkbox"/> N/A + N/A	●		0%	0 S	Start	Stop	
13	<input type="checkbox"/> N/A + N/A	●		0%	0 S	Start	Stop	
14	<input type="checkbox"/> N/A + N/A	●		0%	0 S	Start	Stop	
15	<input type="checkbox"/> N/A + N/A	●		0%	0 S	Start	Stop	
16	<input type="checkbox"/> N/A + N/A	●		0%	0 S	Start	Stop	

Type: Firmware upgrade

Baud rate: 921600

DA download all

☐ Full speed ☒ High speed

☒ Battery ☐ No battery

☐ Auto detect

AutoPulling

☐ EnableAutoPolling

Start all

Stop all

Scan

Auto Polling number:0



9. The tool will automatically detect the USB port on which the phone was connected (to desktop or laptop) and the softing will automatically start, as in the image shown below:

SmartPhone Multi-port download tool (After-Sale Service Center)

File Option Debug Logging Identity Help

DA file name: D:\P5 Life\SP_MDT_exe_v3.1540.00.00(After-Sale_Service_Center)\output\MTK_AllInOne_DA.bin

Authentication file:

Certification File:

Scatter Files: Scatter File: D:\P5 Life\Update_P5_Life_5.0_08.10.2015\MT6582_Android_scatter.txt

			DL			
<input type="checkbox"/> BootRom+PreLoader COM Sel All						
1 <input checked="" type="checkbox"/> N/A + COM 6	●		3%	27 S	Start	Stop
2 <input type="checkbox"/> N/A + N/A	●		0%	0 S	Start	Stop
3 <input type="checkbox"/> N/A + N/A	●		0%	0 S	Start	Stop
4 <input type="checkbox"/> N/A + N/A	●		0%	0 S	Start	Stop
5 <input type="checkbox"/> N/A + N/A	●		0%	0 S	Start	Stop
6 <input type="checkbox"/> N/A + N/A	●		0%	0 S	Start	Stop
7 <input type="checkbox"/> N/A + N/A	●		0%	0 S	Start	Stop
8 <input type="checkbox"/> N/A + N/A	●		0%	0 S	Start	Stop
9 <input type="checkbox"/> N/A + N/A	●		0%	0 S	Start	Stop
10 <input type="checkbox"/> N/A + N/A	●		0%	0 S	Start	Stop
11 <input type="checkbox"/> N/A + N/A	●		0%	0 S	Start	Stop
12 <input type="checkbox"/> N/A + N/A	●		0%	0 S	Start	Stop
13 <input type="checkbox"/> N/A + N/A	●		0%	0 S	Start	Stop
14 <input type="checkbox"/> N/A + N/A	●		0%	0 S	Start	Stop
15 <input type="checkbox"/> N/A + N/A	●		0%	0 S	Start	Stop
16 <input type="checkbox"/> N/A + N/A	●		0%	0 S	Start	Stop

Type: Firmware upgrade

Baud rate: 921600

DA download all:

☐ Full speed ☒ High speed

☒ Battery ☐ No battery

☐ Auto detect

AutoPulling:

☐ EnableAutoPolling

Start all

Stop all

Scan

Format EMMC flash: begin_addr(0x000000003120000), length(0x00000001BF5E0000). Auto Polling number:0



10. The completion of software writing will be notified with **PASS** message, as shown below:

SmartPhone Multi-port download tool (After-Sale Service Center)

File Option Debug Logging Identity Help

DA file name: D:\P5 Life\SP_MDT_exe_v3.1540.00.00(After-Sale_Service_Center)\output\MTK_AllInOne_DA.bin

Authentication file:

Certification File:

Scatter Files: Scatter File: D:\P5 Life\Update_P5_Life_5.0_08.10.2015\MT6582_Android_scatter.txt

☐ BootRom+PreLoader COM Sel All

1	<input checked="" type="checkbox"/> N/A + COM 8	●	Cksm(USRDATA) OK	100%	609 S	Start	Stop	PASS
2	<input type="checkbox"/> N/A + N/A	●		0%	0 S	Start	Stop	
3	<input type="checkbox"/> N/A + N/A	●		0%	0 S	Start	Stop	
4	<input type="checkbox"/> N/A + N/A	●		0%	0 S	Start	Stop	
5	<input type="checkbox"/> N/A + N/A	●		0%	0 S	Start	Stop	
6	<input type="checkbox"/> N/A + N/A	●		0%	0 S	Start	Stop	
7	<input type="checkbox"/> N/A + N/A	●		0%	0 S	Start	Stop	
8	<input type="checkbox"/> N/A + N/A	●		0%	0 S	Start	Stop	
9	<input type="checkbox"/> N/A + N/A	●		0%	0 S	Start	Stop	
10	<input type="checkbox"/> N/A + N/A	●		0%	0 S	Start	Stop	
11	<input type="checkbox"/> N/A + N/A	●		0%	0 S	Start	Stop	
12	<input type="checkbox"/> N/A + N/A	●		0%	0 S	Start	Stop	
13	<input type="checkbox"/> N/A + N/A	●		0%	0 S	Start	Stop	
14	<input type="checkbox"/> N/A + N/A	●		0%	0 S	Start	Stop	
15	<input type="checkbox"/> N/A + N/A	●		0%	0 S	Start	Stop	
16	<input type="checkbox"/> N/A + N/A	●		0%	0 S	Start	Stop	

Type: Firmware upgrade

Baud rate: 921600

DA download all: ☐ Full speed ☒ High speed

☒ Battery ☐ No battery

☐ Auto detect

AutoPulling: ☐ EnableAutoPolling

Start all

Stop all

Scan

Format EMMC flash: begin_addr(0x000000003120000), length(0x00000001BF5E0000). Auto Polling number:0



ATTENTION! Do not interrupt the writing software operation under any circumstances. This operation is made on your own risk, by following precisely all the steps from above.



ATTENTION! The first sequence of boot-ing, after re-writing the software, can take up to 10 minutes.